



Max Fenkell
Policy and Government Affairs Lead
Joby Aviation



The next global aviation race: Zero Emissions



ARCHER



BETA

wisk



EVIATION



Certified Aircraft – Not Drone



Type Certification Process

Traditional aircraft designed to carry people are certified against stringent safety criteria by the FAA & the Joby aircraft follows this path.



Drones

Unmanned aircraft have been allowed to fly without design certification provided they don't put people on the ground at risk.





Meet Joby

A **vertically integrated** transportation company

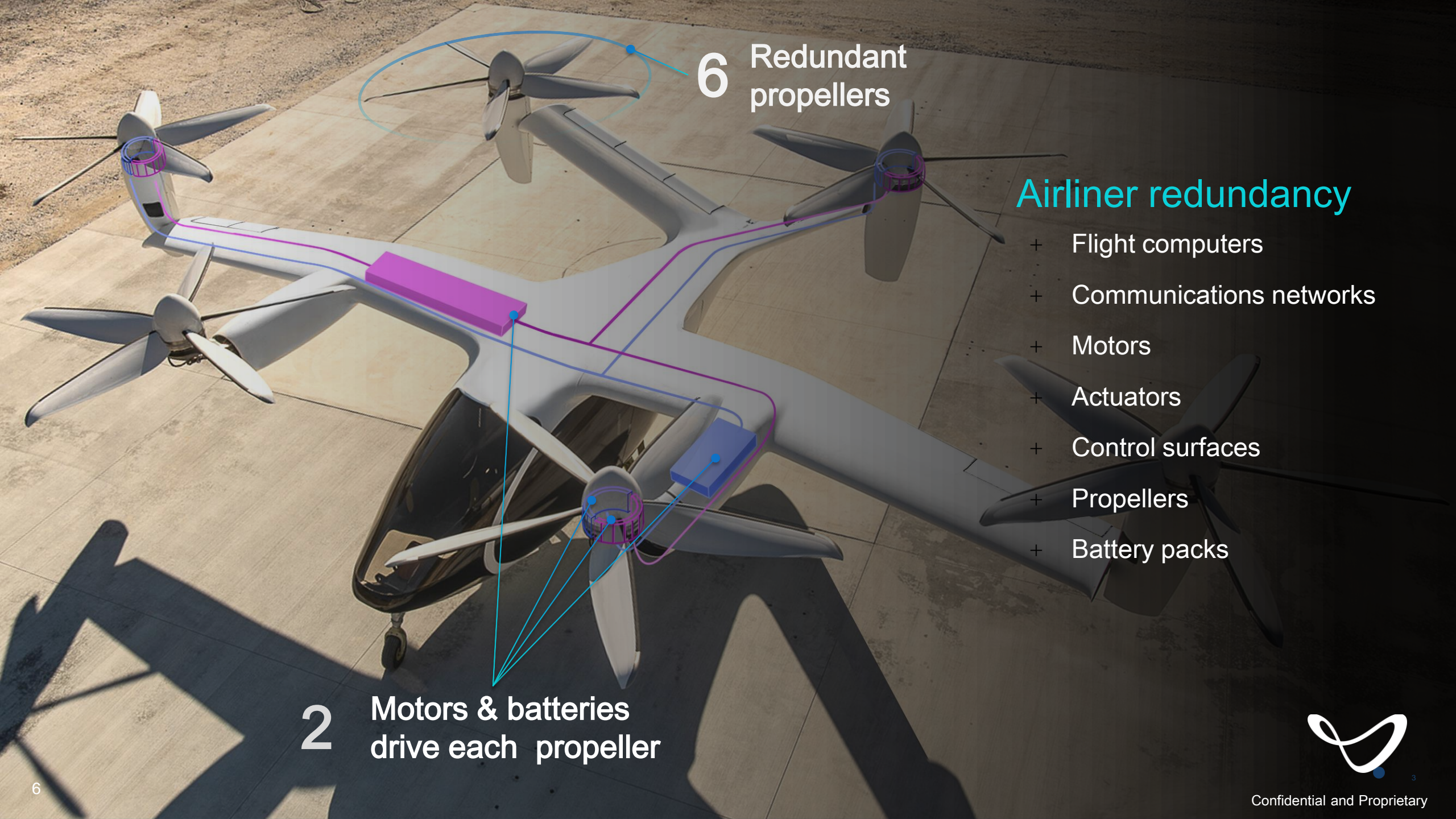
We **develop, test, manufacture** and will **operate** a revolutionary new aircraft

Plan to launch our **app-based** aerial ridesharing service directly to end-users

1000+ employees across California, Washington DC and Munich, Germany







6 Redundant propellers

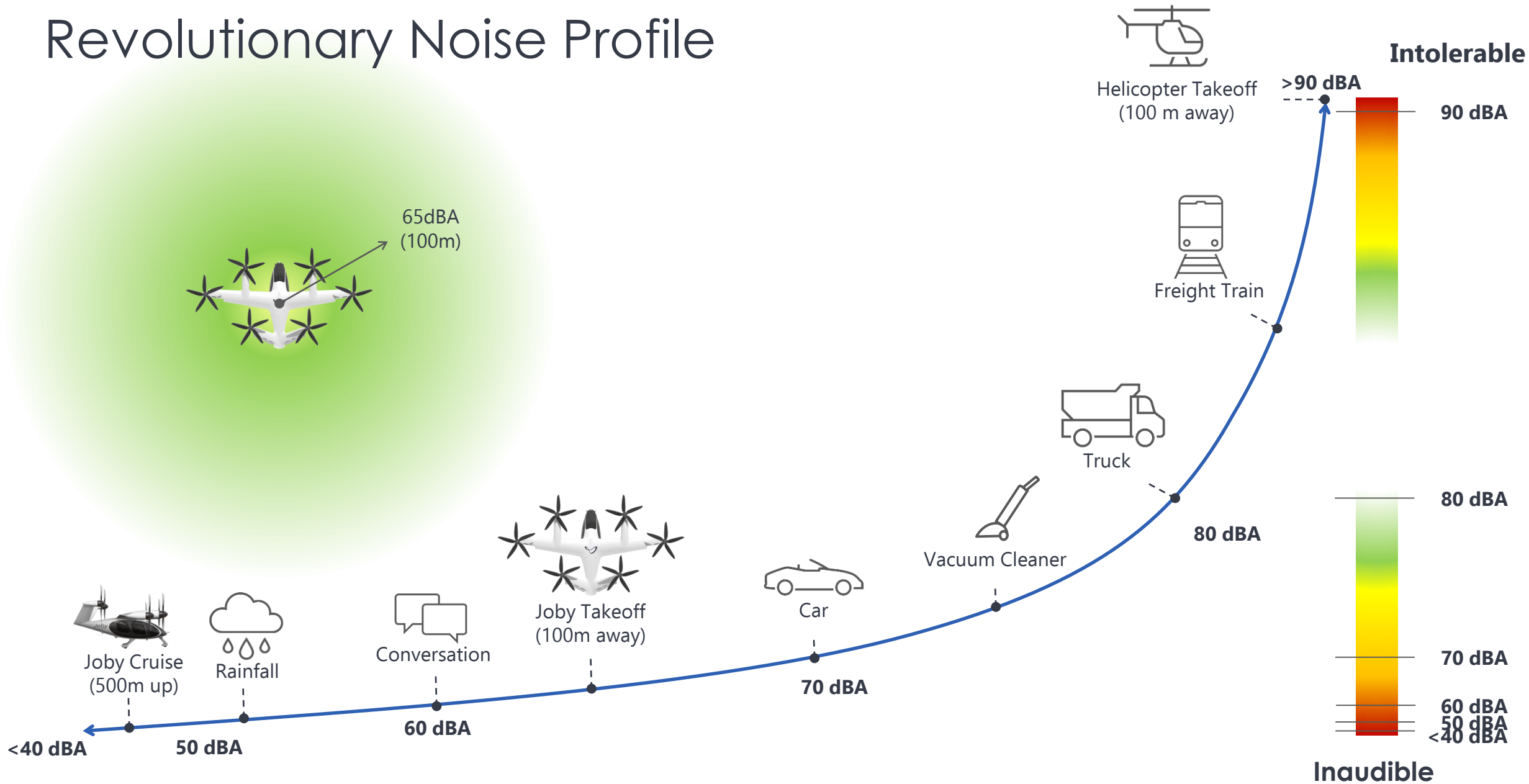
Airliner redundancy

- + Flight computers
- + Communications networks
- + Motors
- + Actuators
- + Control surfaces
- + Propellers
- + Battery packs

2 Motors & batteries drive each propeller



Revolutionary Noise Profile





Mobile
Acoustics
Facility



A lot can happen in a few years...

2016

First deal to curb aviation emissions agreed in landmark UN accord

2021

Major U.S. Airlines Commit to Net-Zero Carbon Emissions by 2050

Europe's aviation sector launches ambitious plan to reach net zero by 2050

2022

ICAO sets goal of Net Zero Emissions by 2050 at Assembly



From Reducing Carbon

To Emissions-Free Aviation

Today's Aviation

<u>Fleet</u>	
	
<u>Emissions</u>	<u>SAF Emissions</u>
CO2	Less CO2
NoX	NoX
Vapor Trail	Vapor Trail



Era of Electric Aviation



&

H₂

Emissions

No CO2
No NoX
No Vapor Trail

Emissions

No CO2
No NoX
No Vapor Trail



Environmental Impact

What is Joby doing to reduce impacts?

Air:

- ✓ Zero emission aircraft operations: no CO2/GHGs, no water vapor trail, no criteria/toxic air pollutants

Energy

- ✓ Sourcing 100% renewable energy at our primary facilities
- Sourcing 100% renewable energy at all Joby owned/operated Skyports

Water

- ✓ Responsible water usage at all facilities

Waste

- ✓ Working to minimize manufacturing waste
- ✓ Implementing recycling programs for office and manufacturing waste

Sustainable Design

- ✓ Designing an aircraft efficient in manufacturing and in flight



Environmental Impact

How does the Joby S4 compare

LIFE CYCLE EMISSIONS

